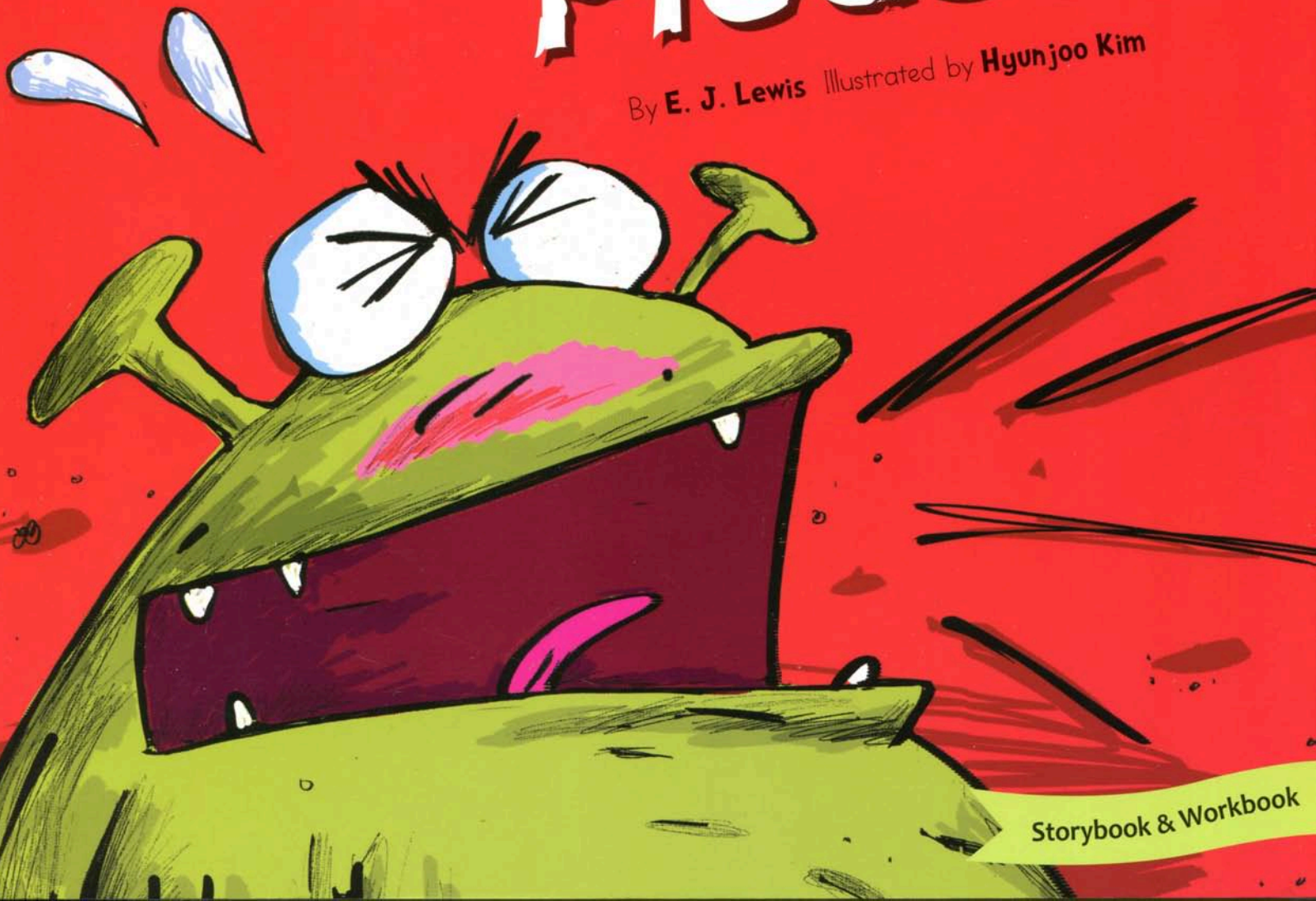


Level



Sit Down, please!

By E. J. Lewis Illustrated by Hyunjoo Kim



Storybook & Workbook

**Sit Down,
Please!**

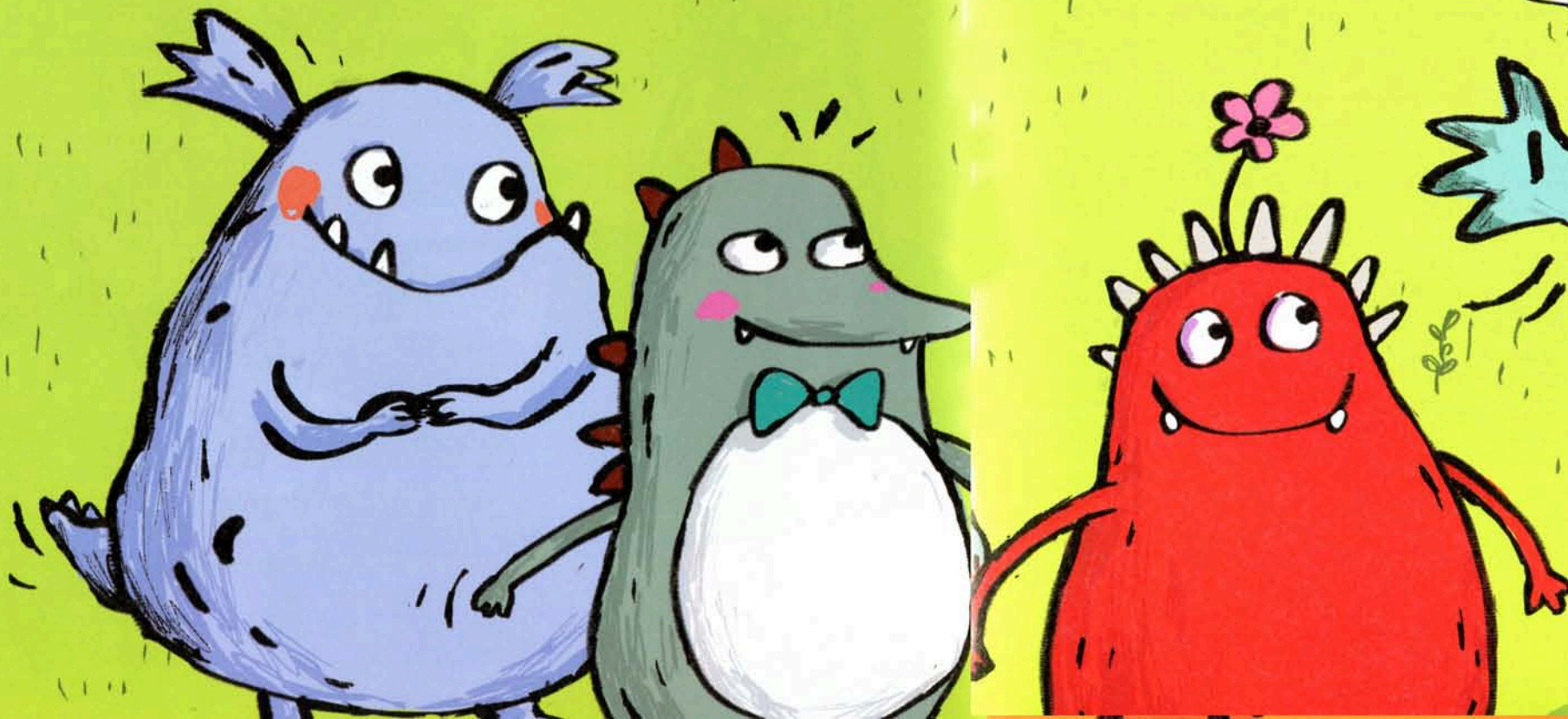


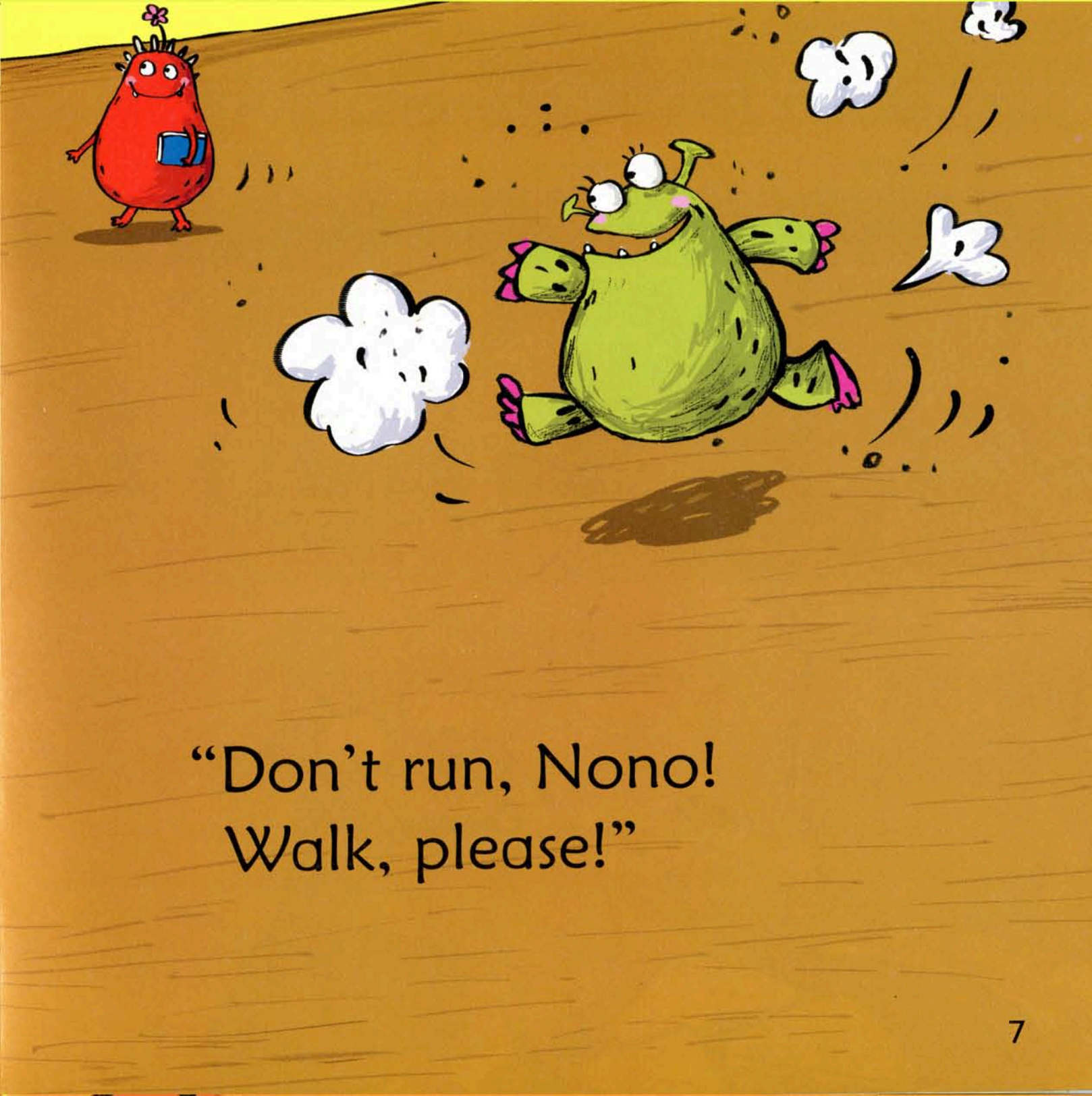
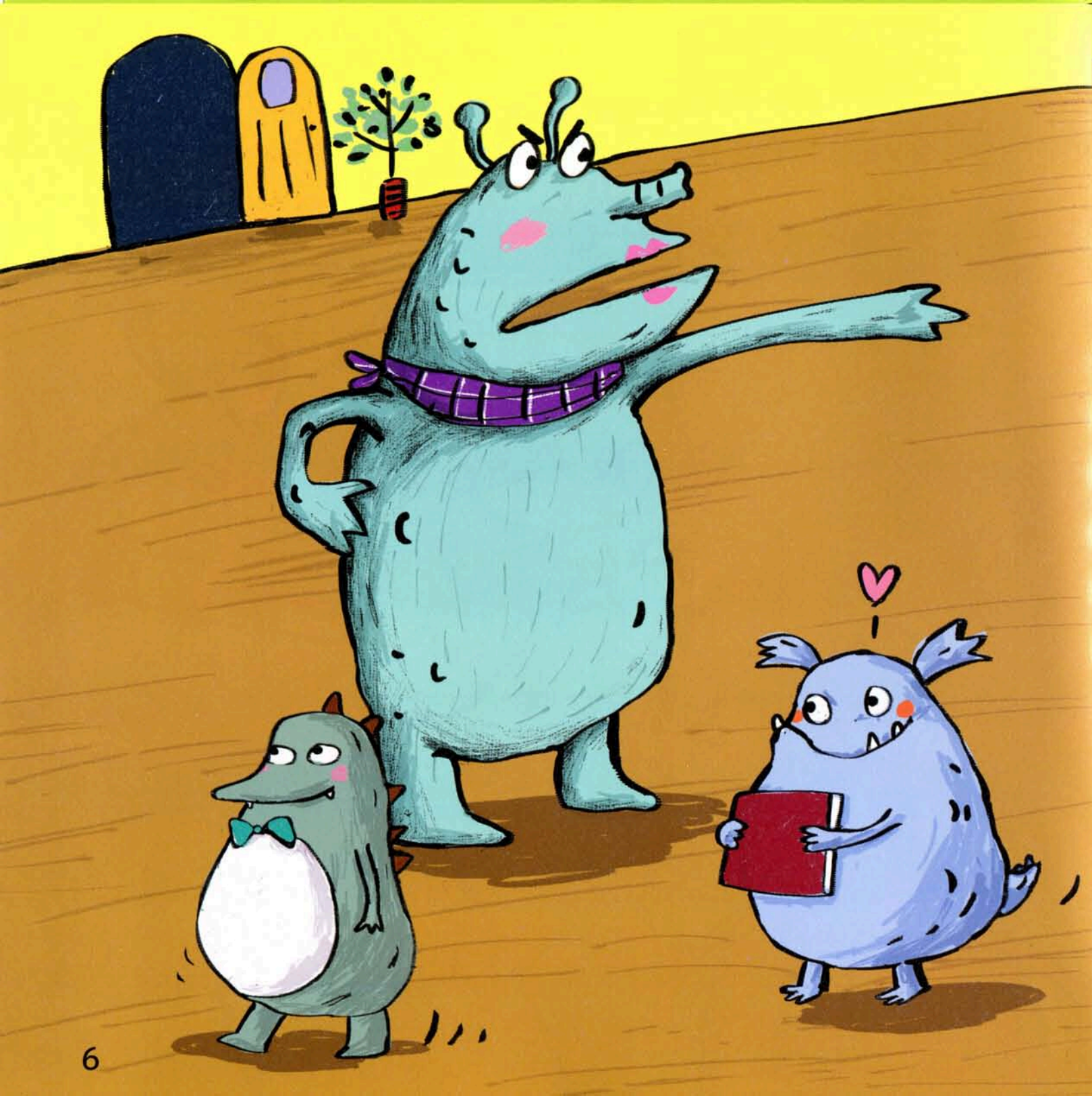


“Stop that, Nono!
Sit down, please!”



“Don’t play, Nono!
Line up, please!”





“Don’t run, Nono!
Walk, please!”

“Don’t touch, Nono!
Wash your hands, please!”



Sit down, please!

Level 1  Sit Down, Please!

p. 26



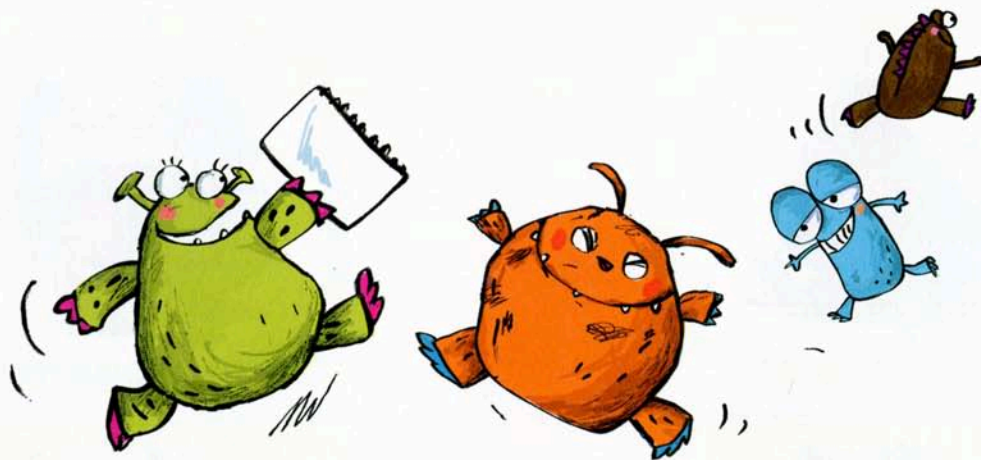
p. 27



p. 33

Yes, this is fun.

Workbook



Picture Dictionary



sit



walk



eat



run



touch



wash



tired



play



Story Warm-up

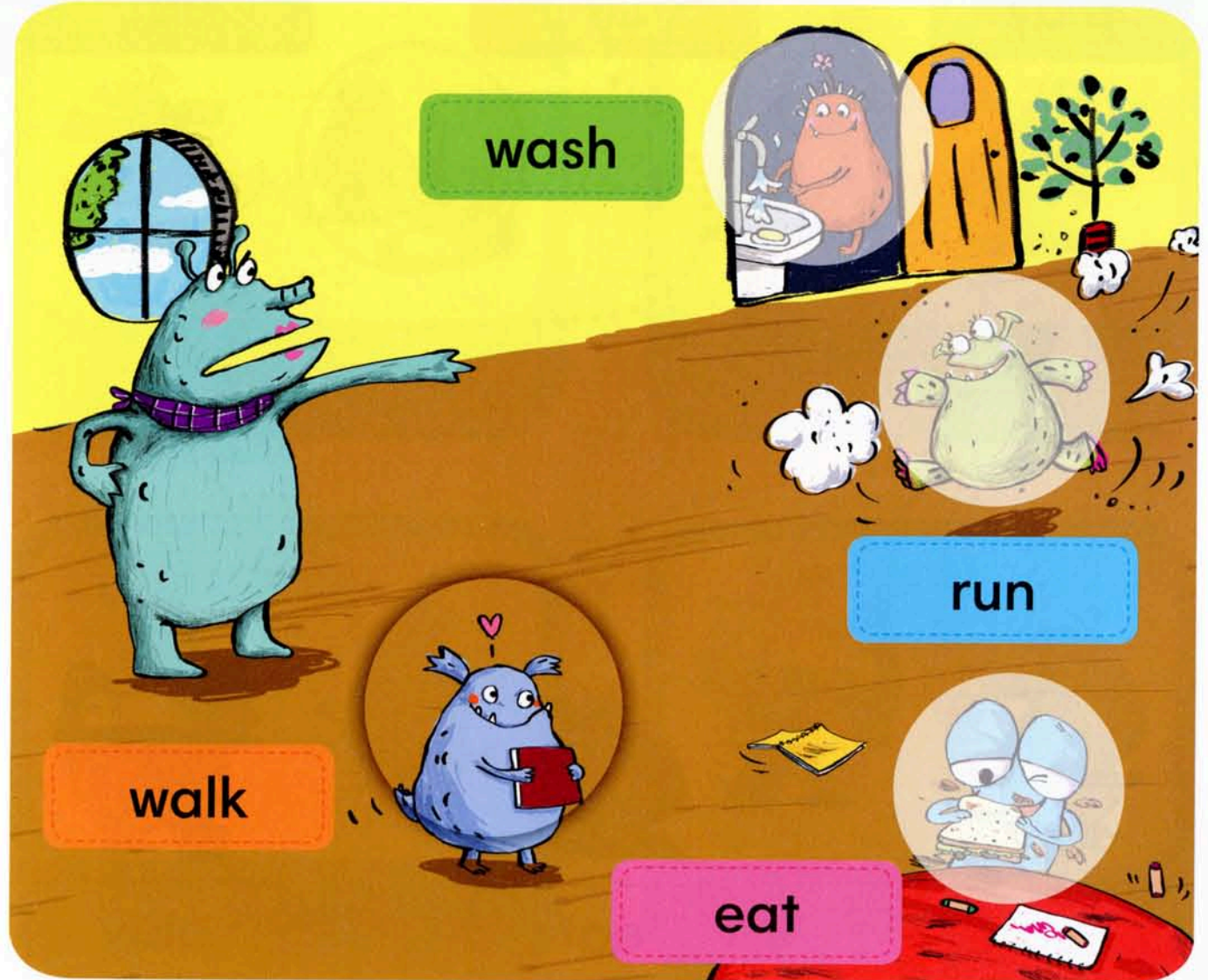
Put 😊 stickers on good behaviors.

Put ☹️ stickers on bad behaviors.



Words

Put on the stickers and read the words.



Follow the lines and trace the words.

play sit eat

Illustrations: A blue monster sitting, a green monster eating, and three monsters playing at a table.

sit eat play

Detailed description: This page features a tracing exercise. At the top, three colored boxes contain the words 'play' (green), 'sit' (orange), and 'eat' (blue). Below these are three illustrations: a blue monster sitting on the floor, a green monster eating a large piece of food, and three monsters (one blue, one green, one red) sitting around a table playing a board game. At the bottom, three yellow boxes with dashed borders contain the words 'sit', 'eat', and 'play'. Dotted lines connect the top boxes to the bottom boxes: a green dotted line from 'play' to 'play', an orange dotted line from 'sit' to 'sit', and a blue dotted line from 'eat' to 'eat'.

Read the words and circle the correct pictures.

wash tired

walk touch

Detailed description: This page contains four matching exercises. Each exercise consists of a word in a blue box and two illustrations in a rounded rectangle with a dashed border. 1. The word 'wash' is paired with an illustration of a green monster with a brown puddle next to it and a red monster washing its hands at a sink. 2. The word 'tired' is paired with an illustration of a green monster holding its stomach and another green monster looking exhausted. 3. The word 'walk' is paired with an illustration of a green monster walking and a blue monster walking. 4. The word 'touch' is paired with an illustration of two blue monsters at a table and a green monster touching a red and yellow striped object.