




# Face to Face

**Workbook**


### A Read and write

straight red hair   ~~long brown hair~~   gray hair   curly red hair




brown hair

What does she look like?  
She has long brown hair.




red hair

What does he look like?  
He \_\_\_\_\_  
\_\_\_\_\_.



gray hair





What does he look like?  
He \_\_\_\_\_  
\_\_\_\_\_.



red hair

What does she look like?  
She \_\_\_\_\_  
\_\_\_\_\_.

### B Match and write

			
blue eyes	brown eyes	green eyes	dark brown eyes
•	•	•	•
•	•	•	•
straight brown hair	short blond hair	curly red hair	curly blond hair
•	•	•	•
•	•	•	•
green eyes			

**C** Fill in the blanks



curly black hair / brown eyes

1. What does he look like?  
He has \_\_\_\_\_  
Does he have green eyes?  
No, \_\_\_\_\_



long blond hair / blue eyes

2. \_\_\_\_\_  
\_\_\_\_\_  
\_\_\_\_\_ brown eyes?  
\_\_\_\_\_

**D** Unscramble the sentences

does like ~~What~~ ? he look

→ What \_\_\_\_\_

. has He short hair curly

→ \_\_\_\_\_

have he Does green ? eyes

→ \_\_\_\_\_

does Yes he . ,

→ \_\_\_\_\_

### A Write the answers

~~curly brown hair~~ short gray hair blue sweater green blouse  
 long curly blond hair short gray hair purple blouse white shirt



brown hair / white shirt

Who is Judy's uncle?  
 He is the man with curly brown hair.  
 He is the man in the \_\_\_\_\_.



gray hair / blue sweater

Who is Linda's uncle?  
 He is the man with \_\_\_\_\_.  
 He is the man in the \_\_\_\_\_.



gray hair / purple blouse

Who is Andy's aunt?  
 She is the woman with \_\_\_\_\_.  
 She is the woman in the \_\_\_\_\_.



blond hair / green blouse

Who is Andy's aunt?  
 She is the woman with \_\_\_\_\_.  
 She is the woman in the \_\_\_\_\_.

### B Match and write

Who is Kevin's aunt?



short red hair

He is the man  
 \_\_\_\_\_

Who is Andy's aunt?



short curly brown hair

She is the woman in  
 \_\_\_\_\_

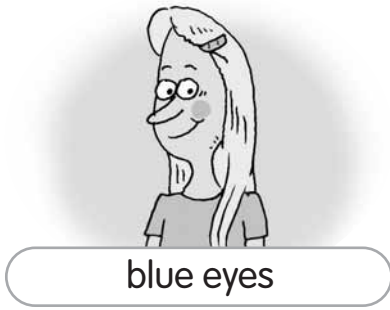
Who is Judy's uncle?



purple blouse

She is the woman with  
 \_\_\_\_\_

**C Match and complete the sentences**



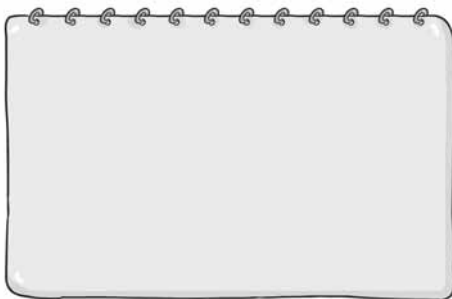
Louise's uncle

Rod's aunt

Stephen's aunt

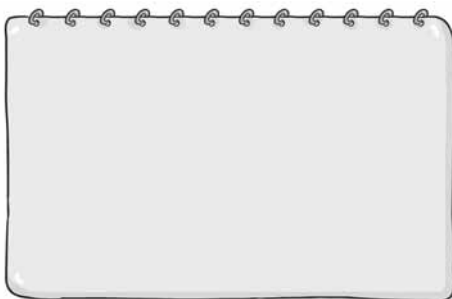
- Who is Stephen's aunt?  
She is the woman \_\_\_\_\_.
- Who is \_\_\_\_\_?  
He \_\_\_\_\_.
- \_\_\_\_\_ Rod's aunt?  
\_\_\_\_\_.

**D Draw and write about your family**



My uncle

My uncle is the man \_\_\_\_\_  
\_\_\_\_\_.



My aunt

My aunt \_\_\_\_\_  
\_\_\_\_\_.